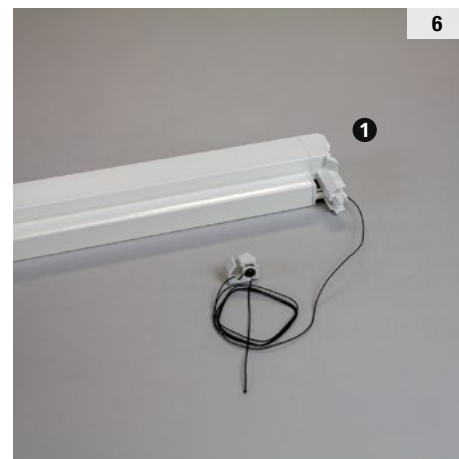
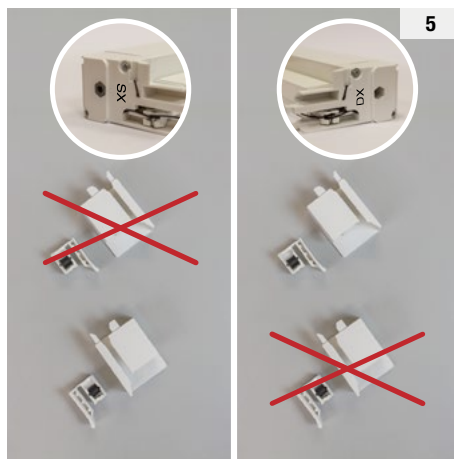
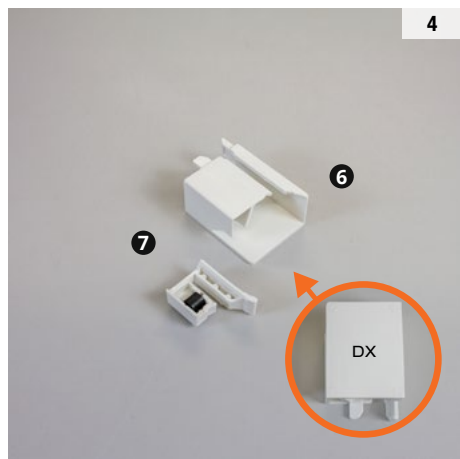
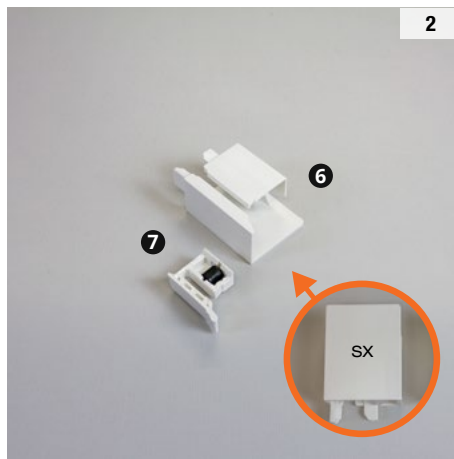
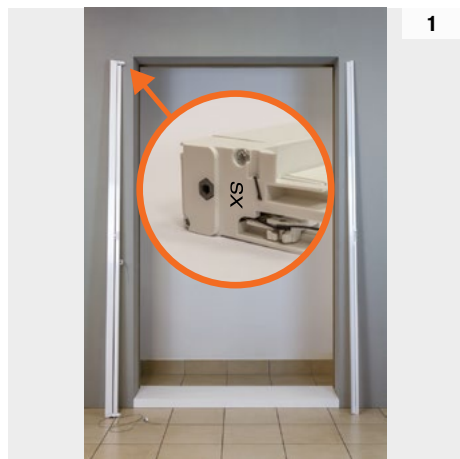
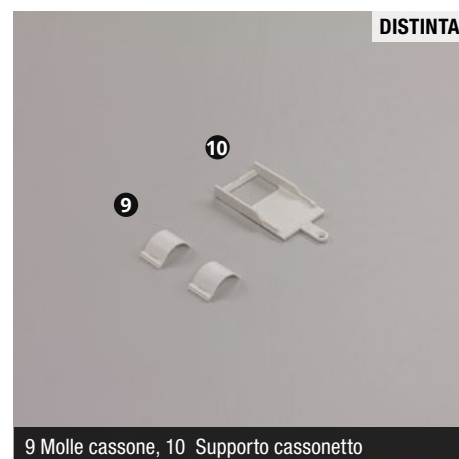
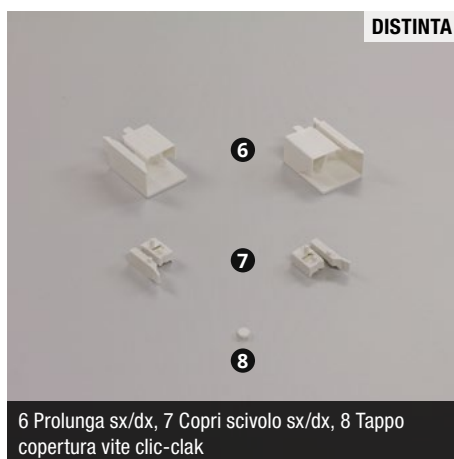


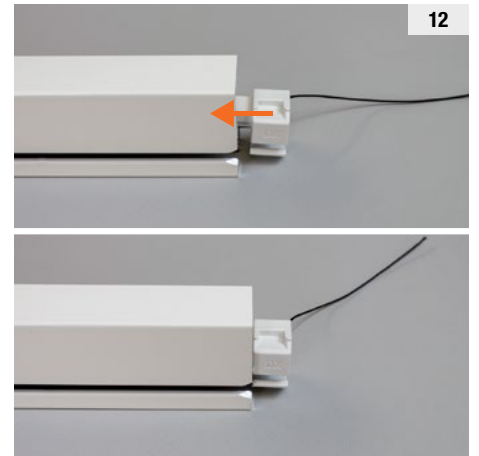
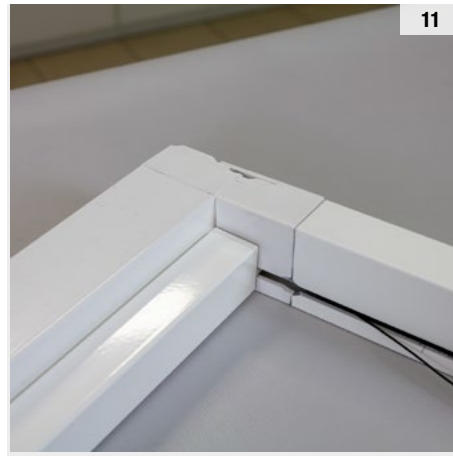
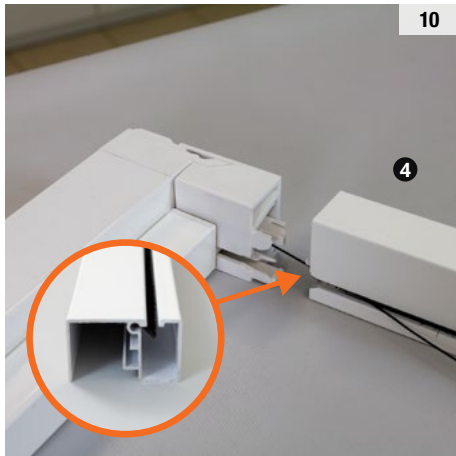
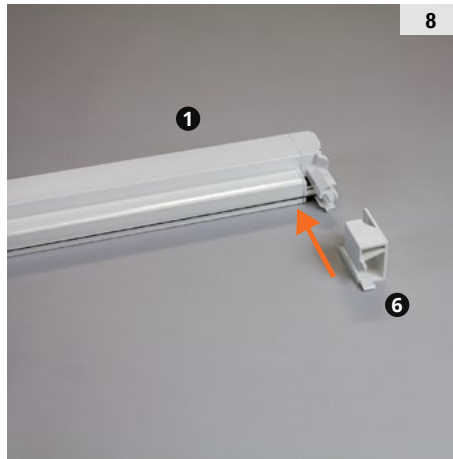
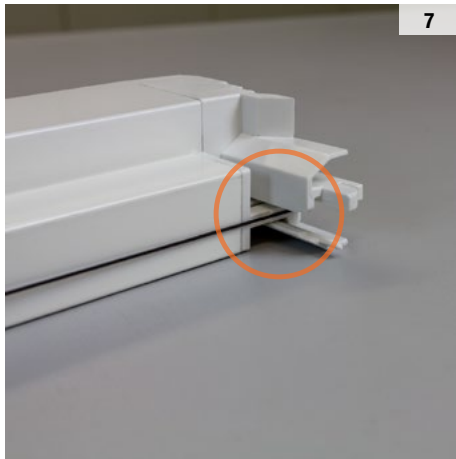
## ISTRUZIONI DI MONTAGGIO

# VIRTUS

by Bettio

1 BATTENTE CON VITI – PRODUZIONE DAL 1/12/25

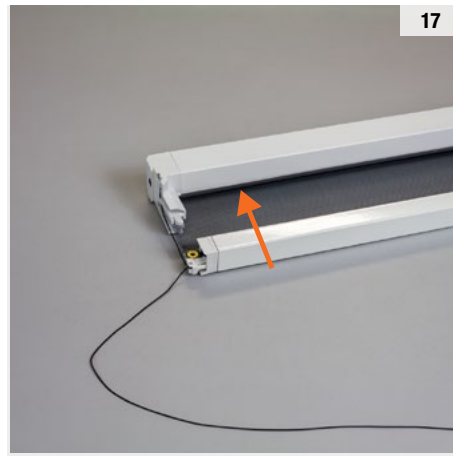
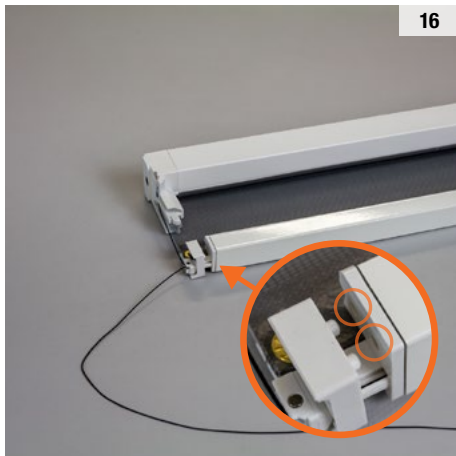
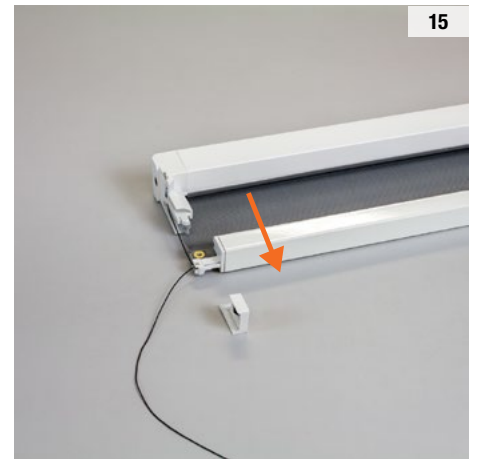
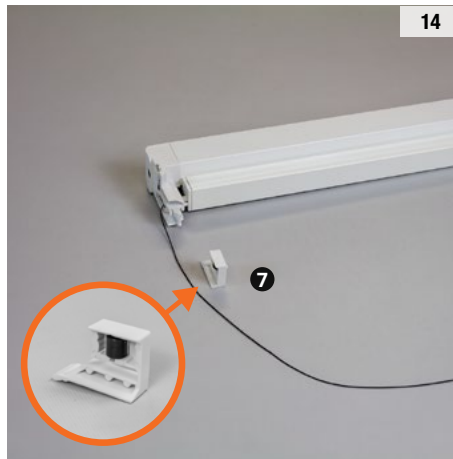




UPPER PART:  
Use the extension corresponding to the end cap that  
will be placed on top.

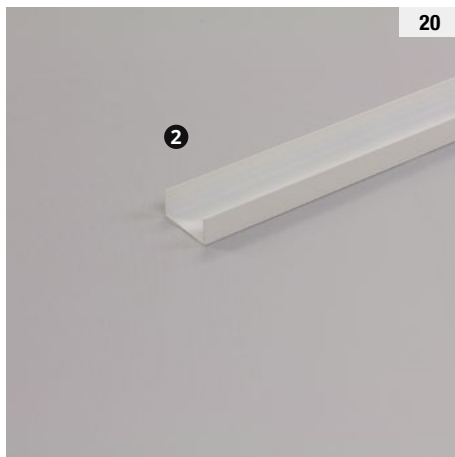
**OK!**

If you have the SX end cap on top, choose the SX extension.  
If you have the DX end cap on top, choose the DX extension.





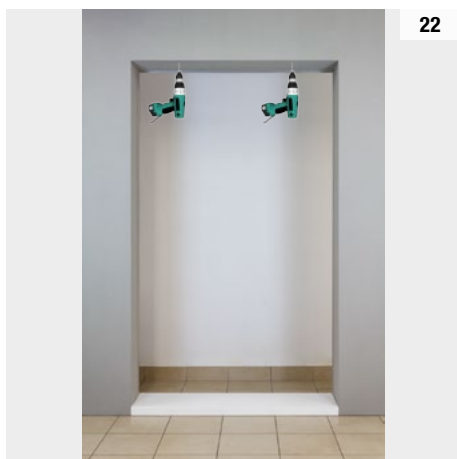
19



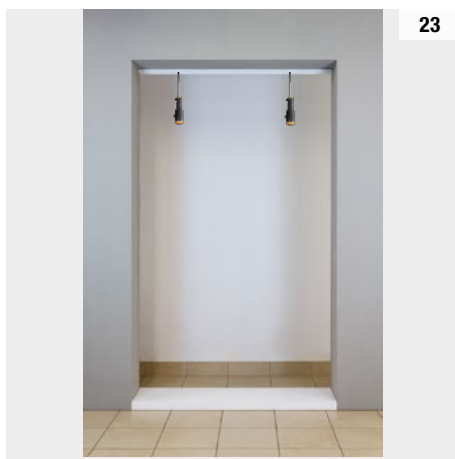
20



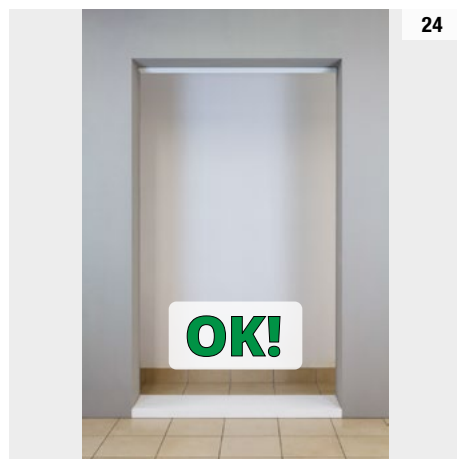
21



22



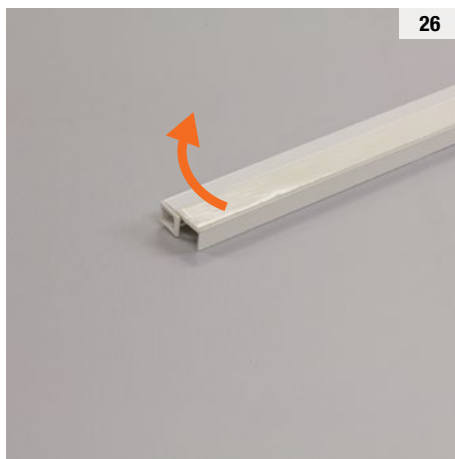
23



24



25



26



27

Sgrassare e asciugare la superficie di fissaggio prima di incollare il biadesivo: la completa adesione si ottiene dopo almeno 24 ore.



28



29



30

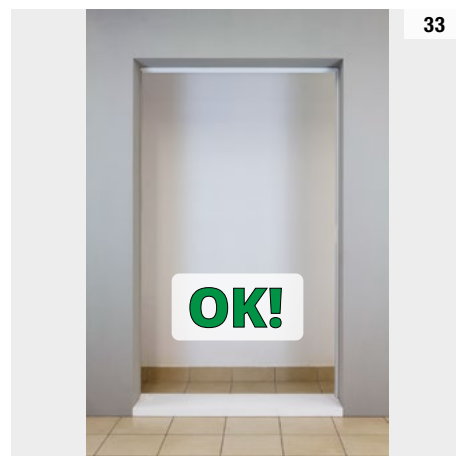
ø 8 mm



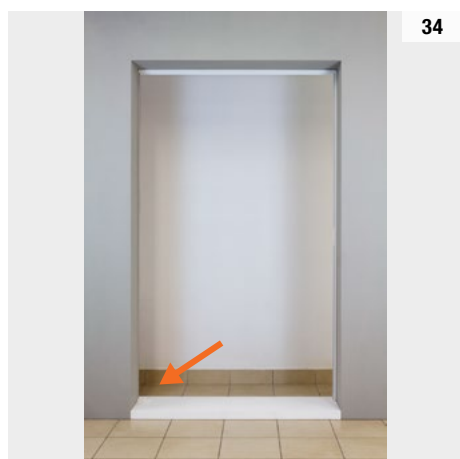
31



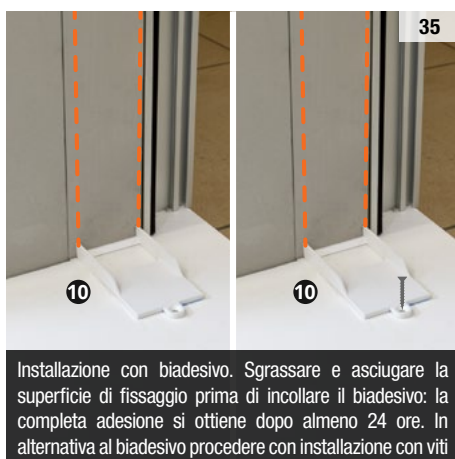
32



33

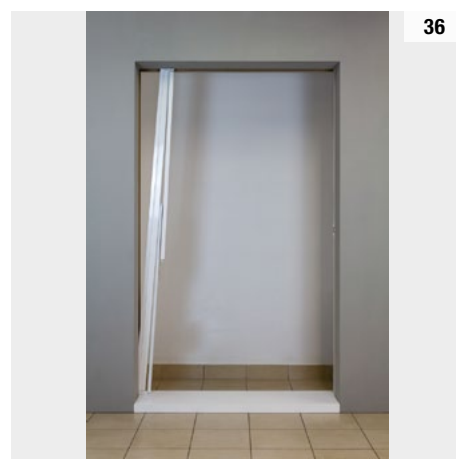


34



35

Installazione con biadesivo. Sgrassare e asciugare la superficie di fissaggio prima di incollare il biadesivo: la completa adesione si ottiene dopo almeno 24 ore. In alternativa al biadesivo procedere con installazione con viti



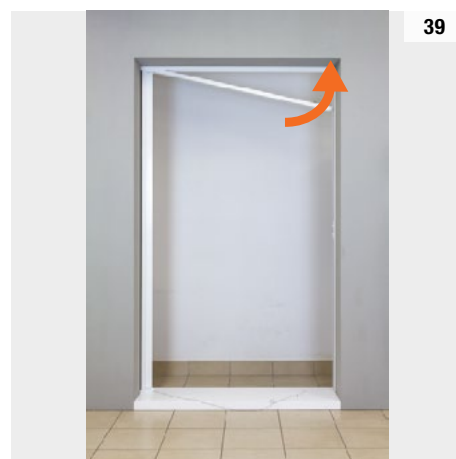
36



37



38



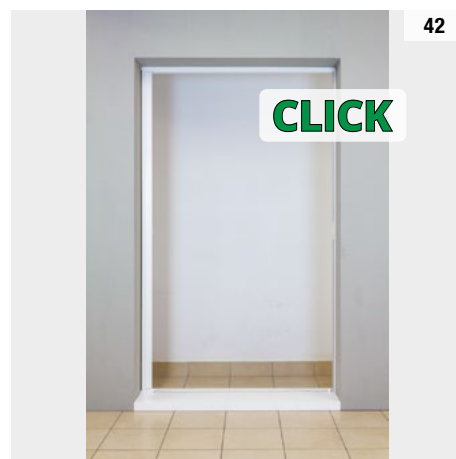
39



40



41



42

