

ISTRUZIONI DI MONTAGGIO

NEOSCENICA®

V4 ATTACCO FRONTALE – 2 BATTENTI

ATTENZIONE

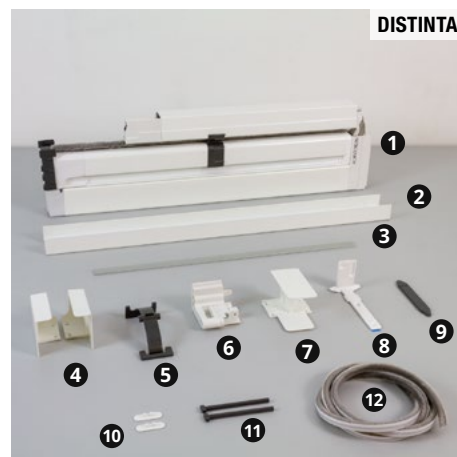


Per l'installazione di Neoscenica V4 bisogna utilizzare solo gli accessori indicati.

DISTINTA

- 1 Zanzariera
- 2 Profilo compensatore (x2)
- 3 Profilo di scorrimento (opt)
- 4 Staffe attacco frontale (SX e DX)
- 5 Molla di spinta (x2)
- 6 Gruppo di spinta (x2)
- 7 Cuffia 2 battenti
- 8 Supporto cassonetto (x2)
- 9 Piastrina a pavimento
- 10 Tappo per staffa (x2)
- 11 Staffa (x2)
- 12 Spazzolino perimetrale biadesivato

DISTINTA



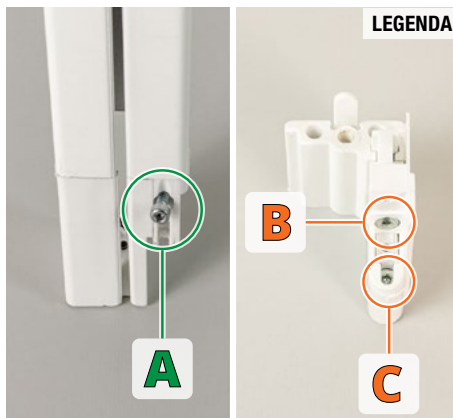
UTENSILI



HEX 3

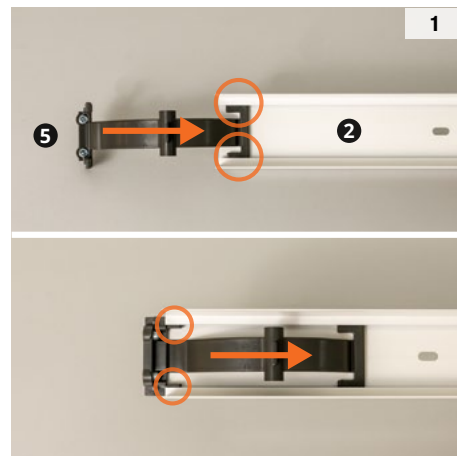
Utensili e accessori consigliati per l'installazione.

LEGENDA



Viti di installazione e regolazione.

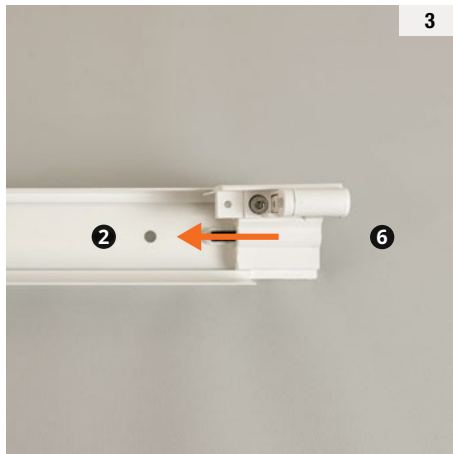
1



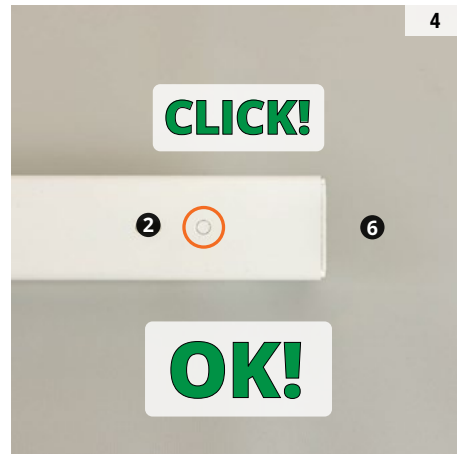
2

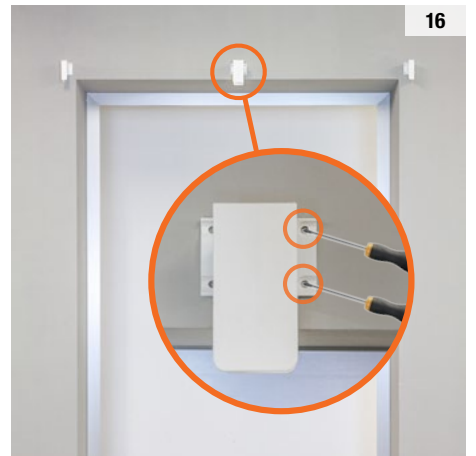
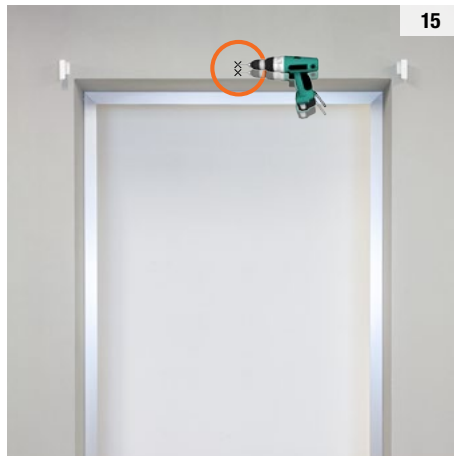
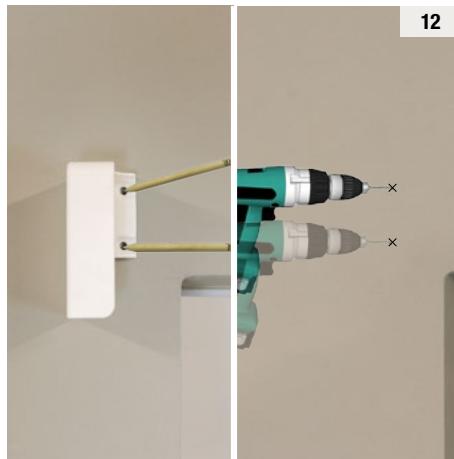
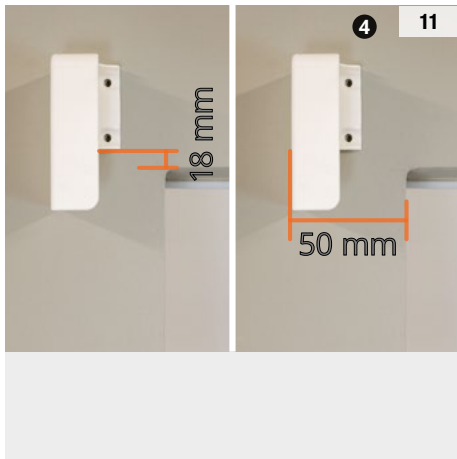
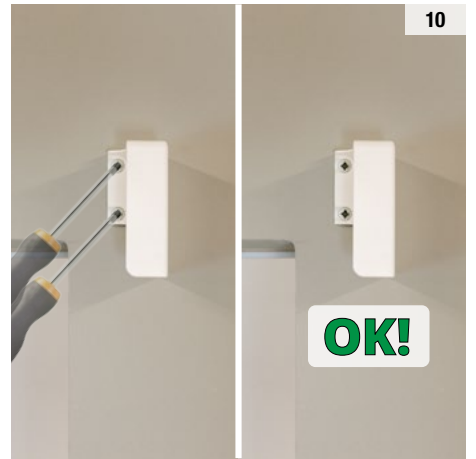
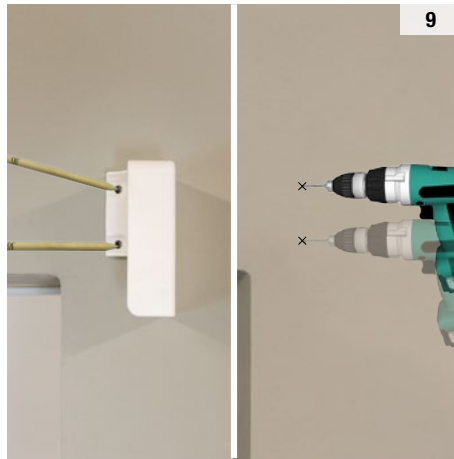
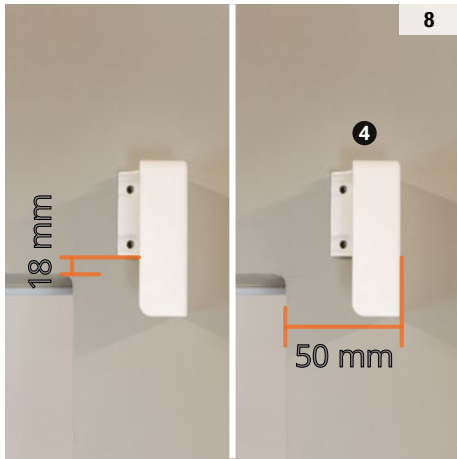
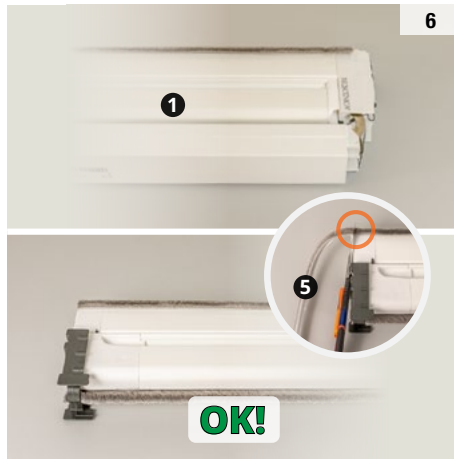


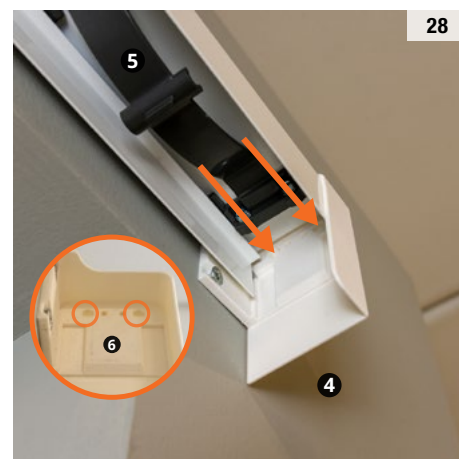
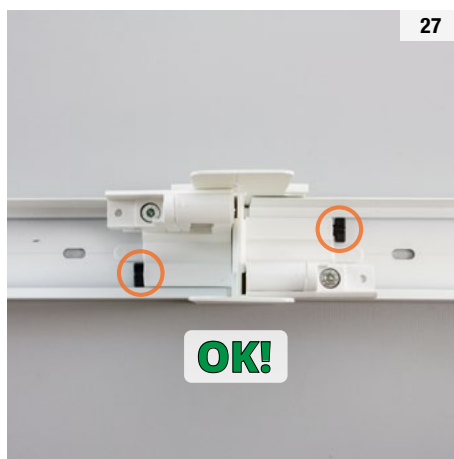
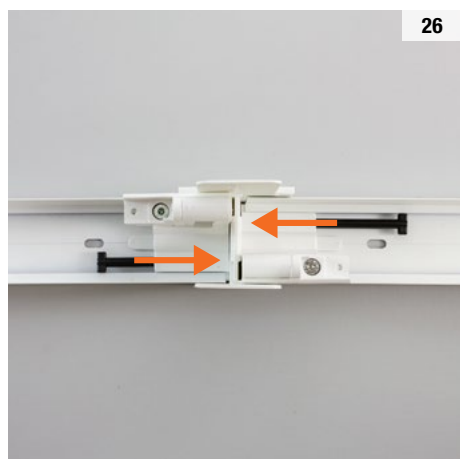
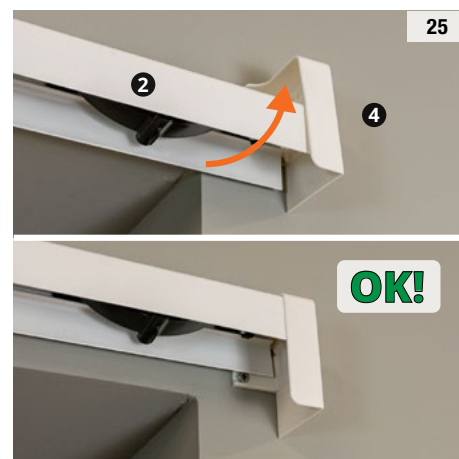
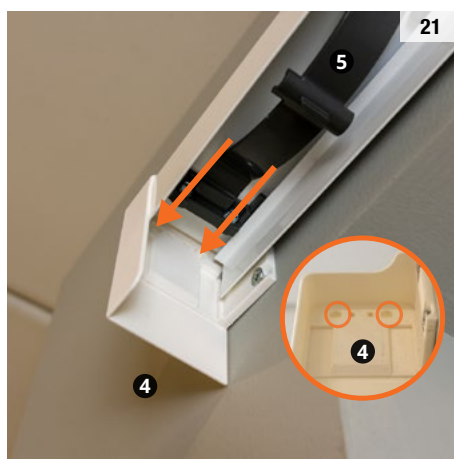
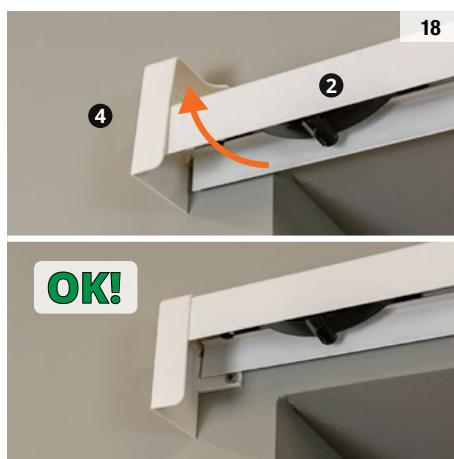
3

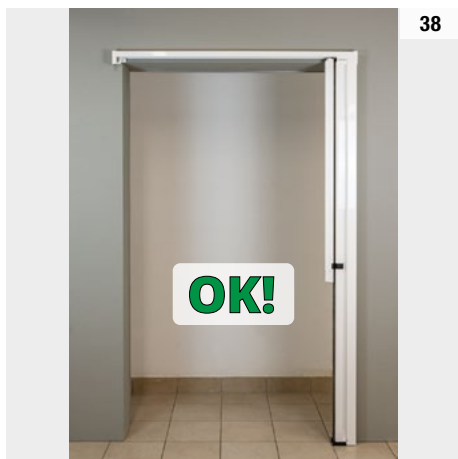
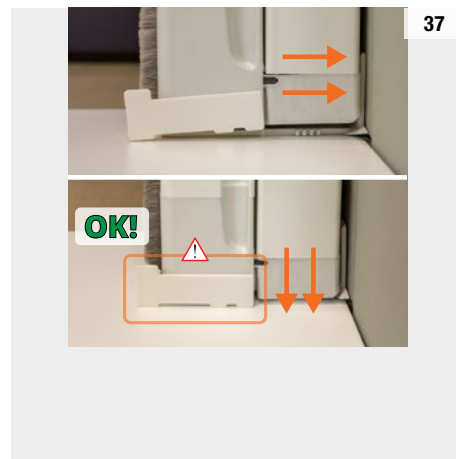


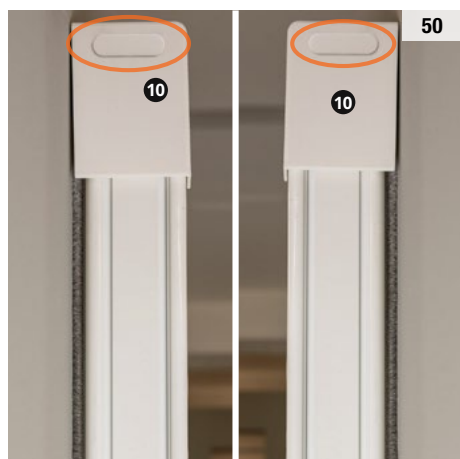
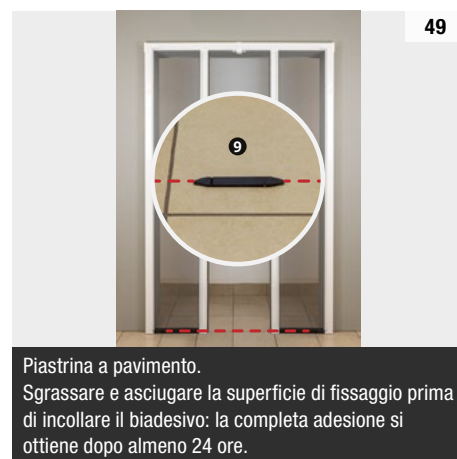
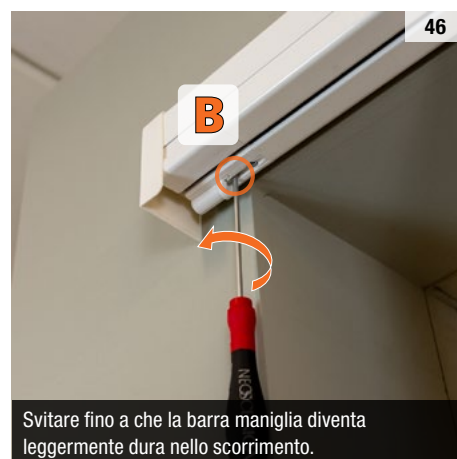
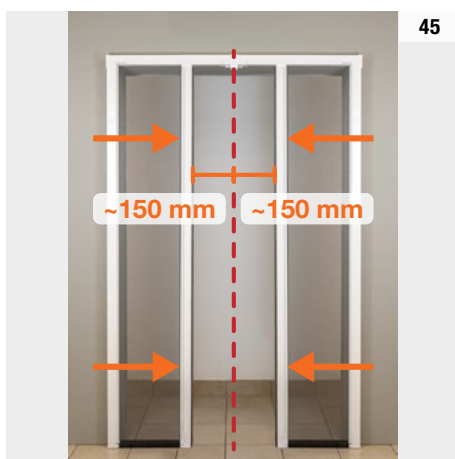
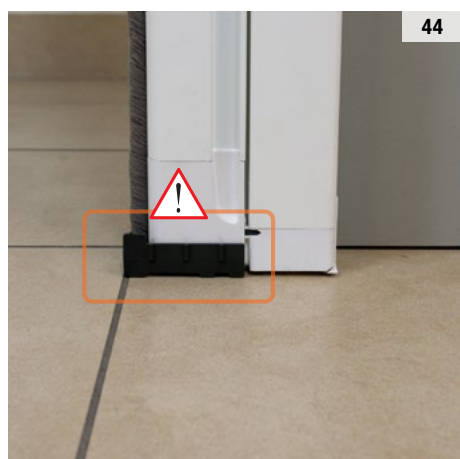
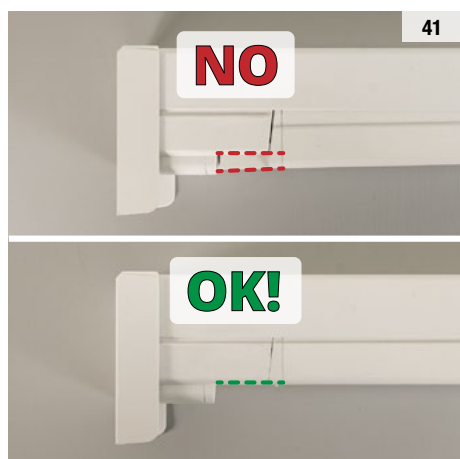
4









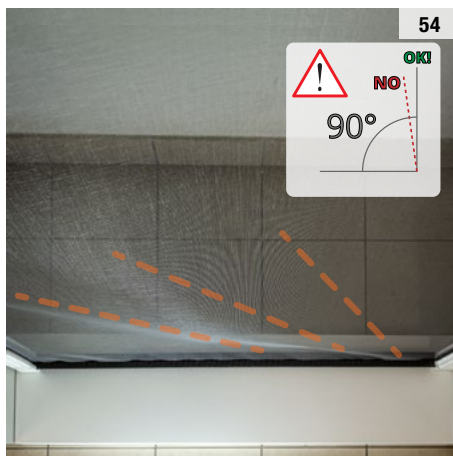


53

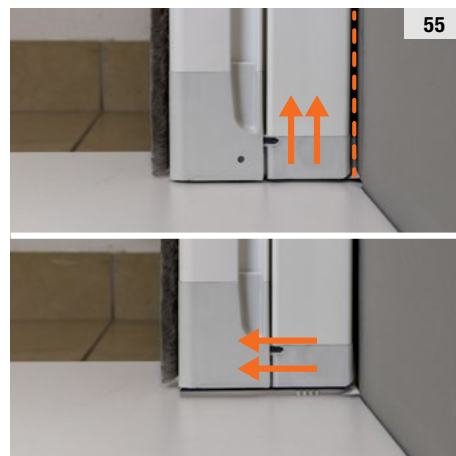


Se l'installazione di Neoscenica è stata eseguita correttamente, non dovrebbe essere necessario regolare alcun fuori squadra. Se invece fosse necessario, procedere come indicato negli step successivi.

54



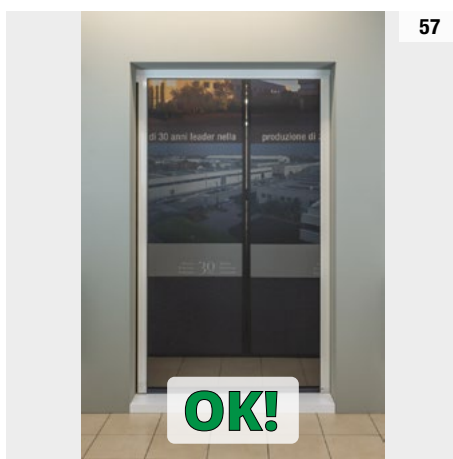
55



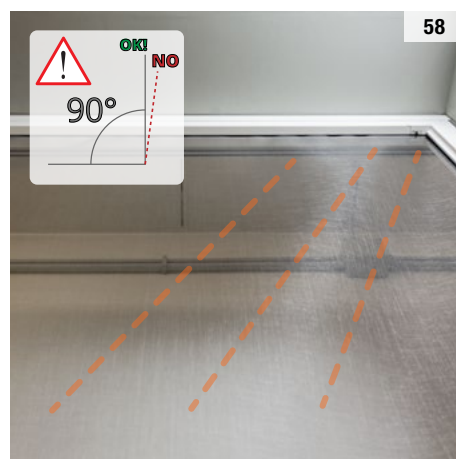
56



57



58



59



60

