

ISTRUZIONI DI MONTAGGIO

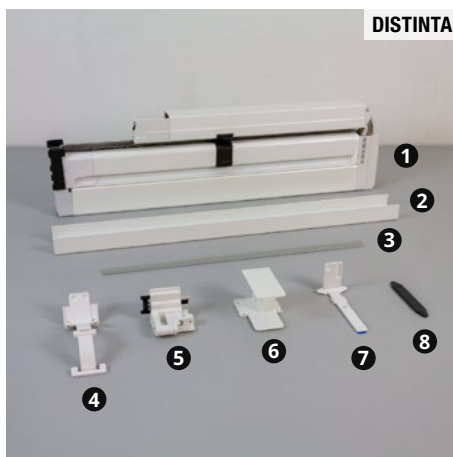
NEOSCENICA®

V2 CIELINO NON PORTANTE – 2 BATTENTI CON VITI LATERALI

DISTINTA

- 1 Zanzariera
- 2 Profilo compensatore (x2)
- 3 Profilo di scorrimento (opt)
- 4 Molla di spinta (x2)
- 5 Gruppo di spinta (x2)
- 6 Cuffia 2 battenti
- 7 Supporto cassonetto (x2)
- 8 Piastrina a pavimento

DISTINTA

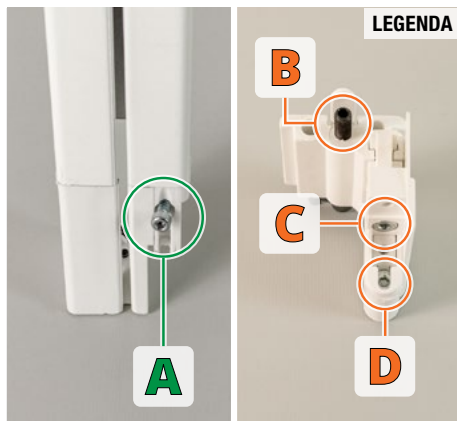


UTENSILI



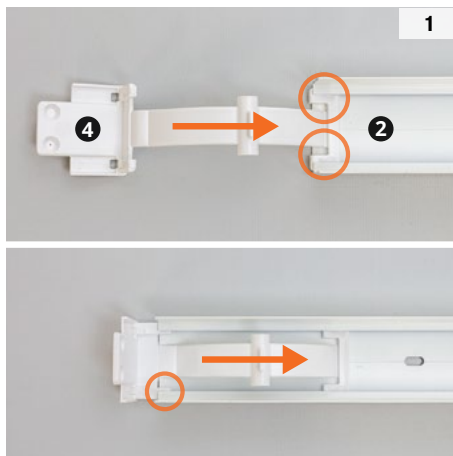
Utensili e accessori consigliati per l'installazione.

LEGENDA



Viti di installazione e regolazione.

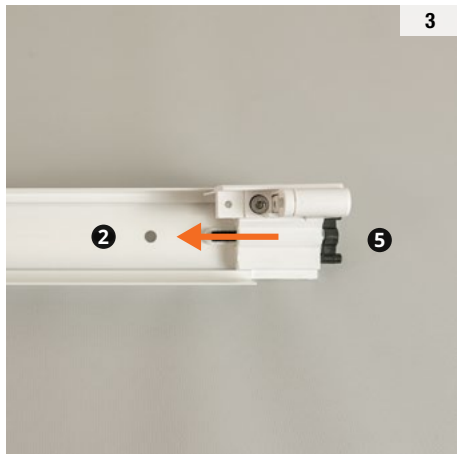
1



2



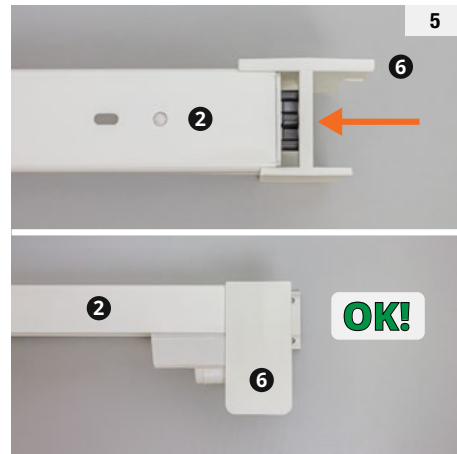
3

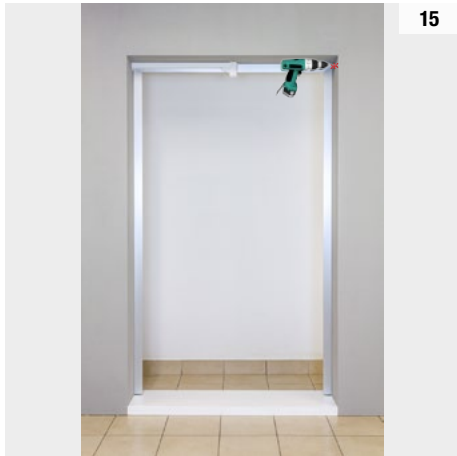
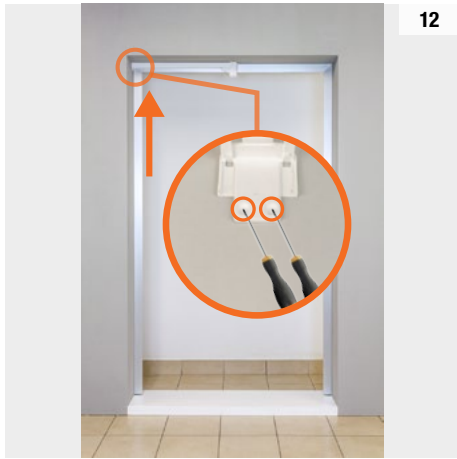
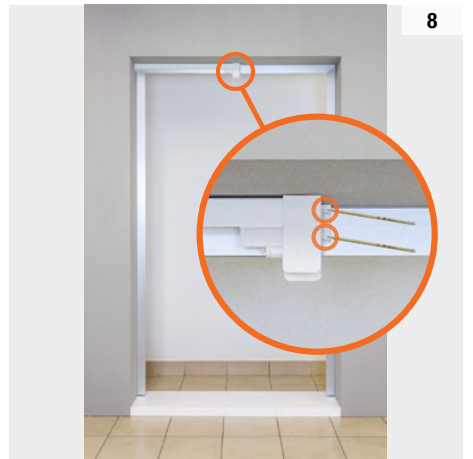
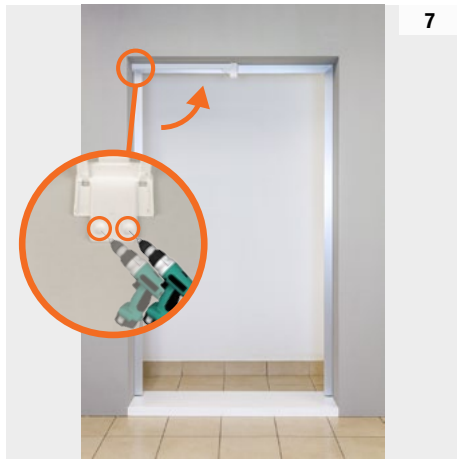


4



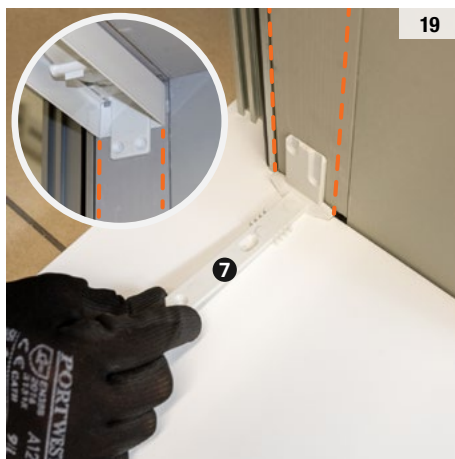
5







18

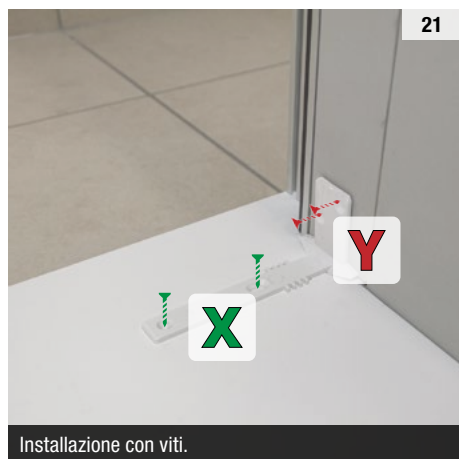


19



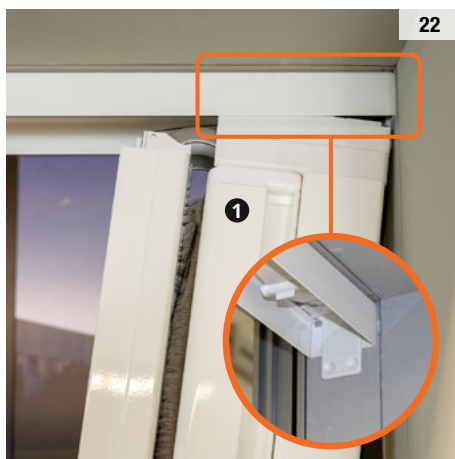
20

Installazione con biadesivo.
Sgrassare e asciugare la superficie di fissaggio prima di incollare il biadesivo: la completa adesione si ottiene dopo almeno 24 ore.

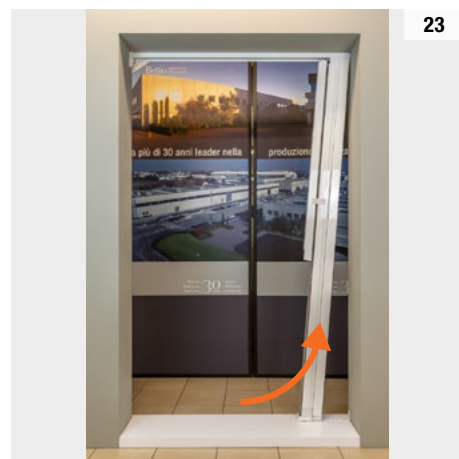


21

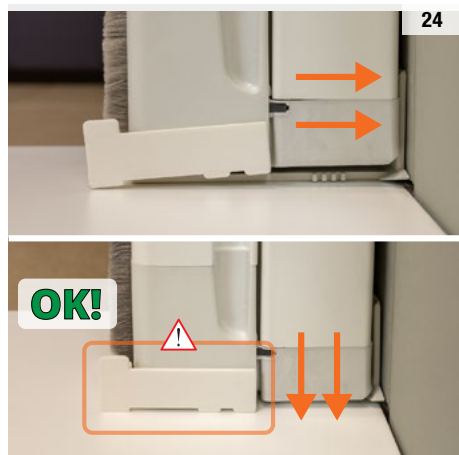
Installazione con viti.



22



23



24



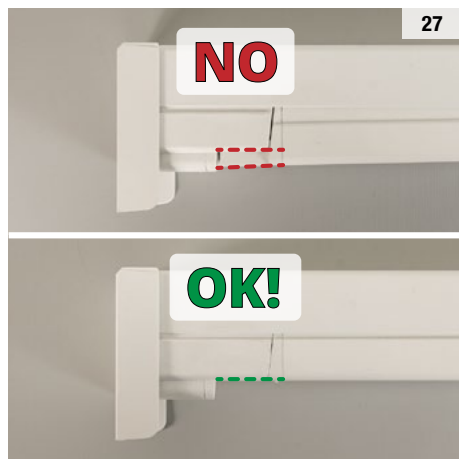
25

Avvitare completamente la vite.



26

Accompagnare la guida senza forzare il movimento.

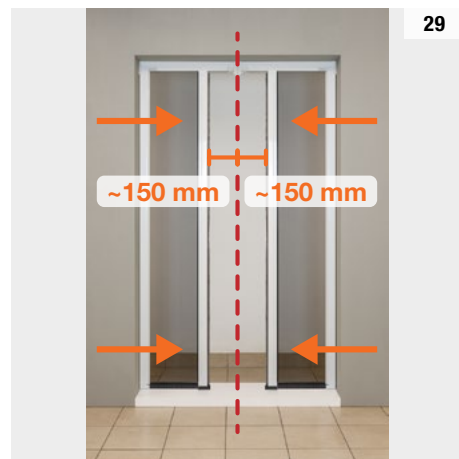


27

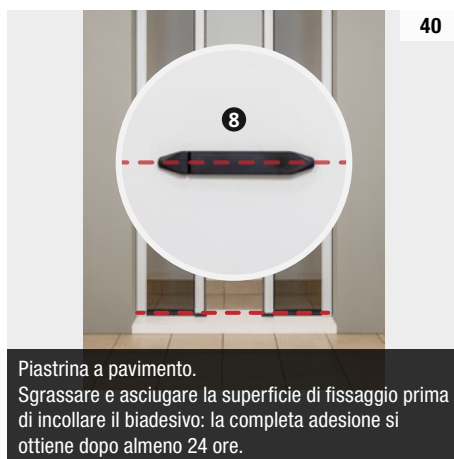
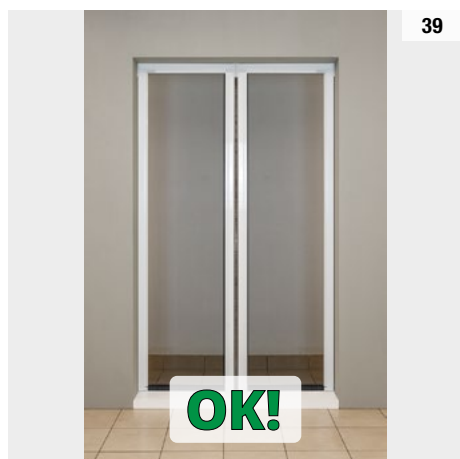
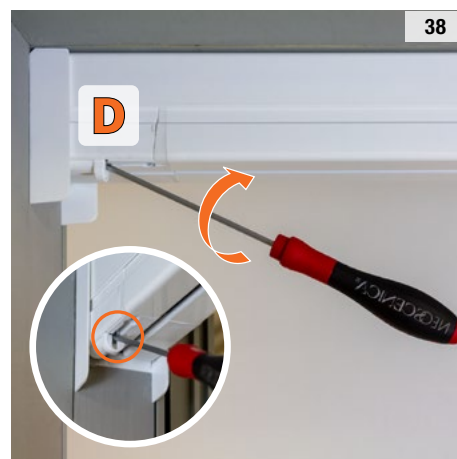
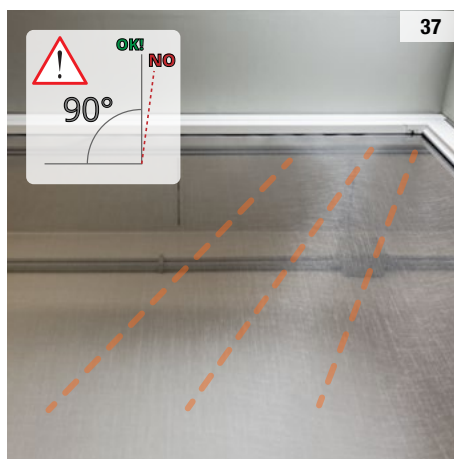
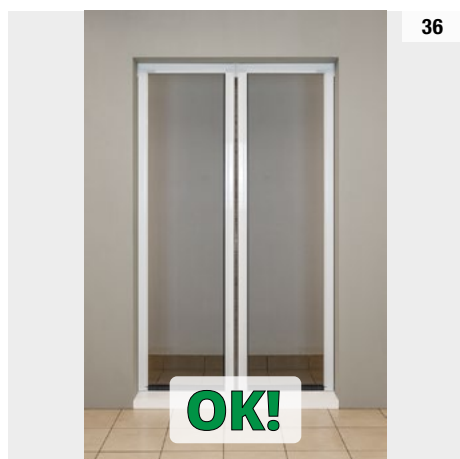
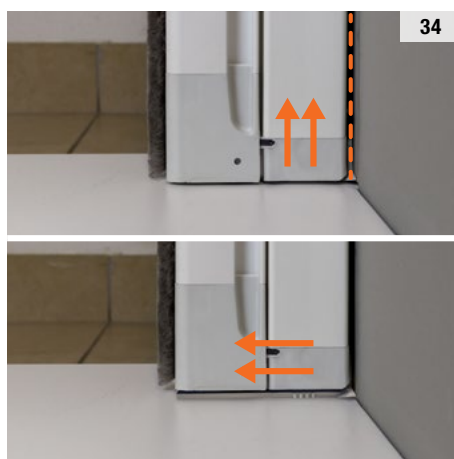
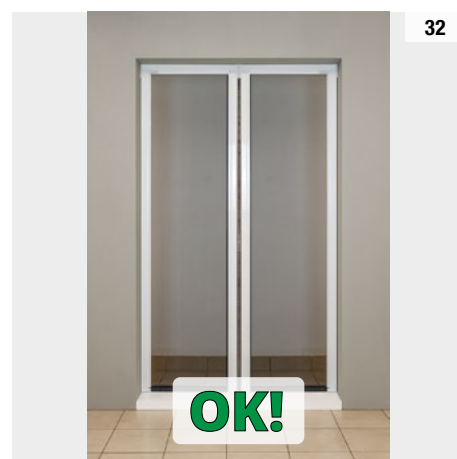


28

Conservare l'accessorio in caso il prodotto debba essere imballato nuovamente.



29





Sgrassare e asciugare la superficie di fissaggio prima di incollare il biadesivo: la completa adesione si ottiene dopo almeno 24 ore.