

ISTRUZIONI DI MONTAGGIO

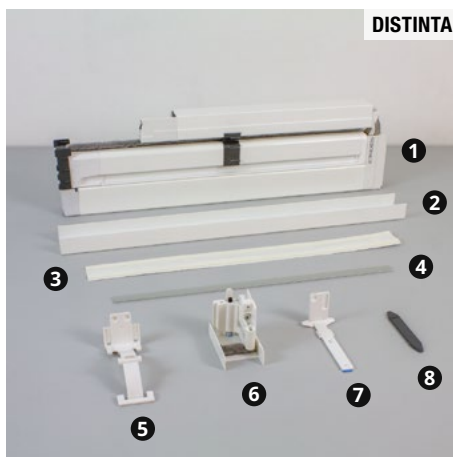
NEOSCENICA®

V1 STANDARD – 2 BATTENTI CON VITI

DISTINTA

- 1 Zanzariera
- 2 Profilo compensatore (x2)
- 3 Biadesivo per profilo compensatore
- 4 Profilo di scorrimento (opt)
- 5 Molla di spinta (x2)
- 6 Gruppo di spinta (x2)
- 7 Supporto cassonetto (x2)
- 8 Piastrina a pavimento

DISTINTA



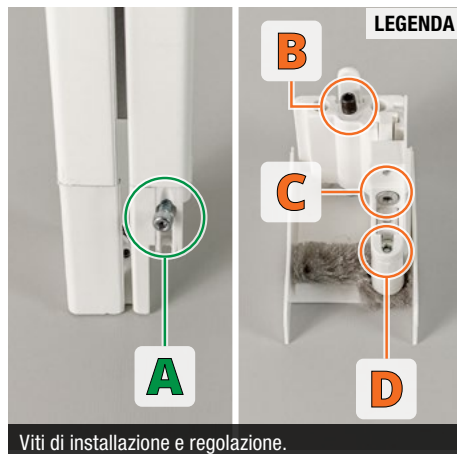
UTENSILI

Utensili e accessori consigliati per l'installazione.

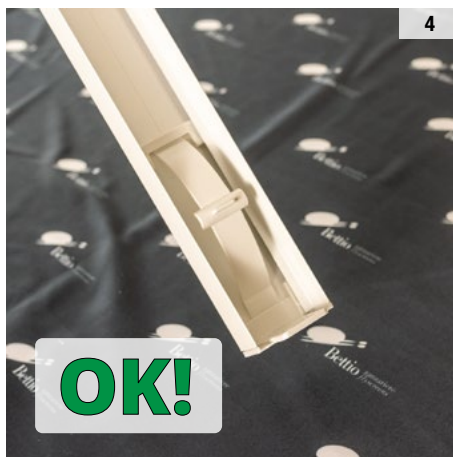
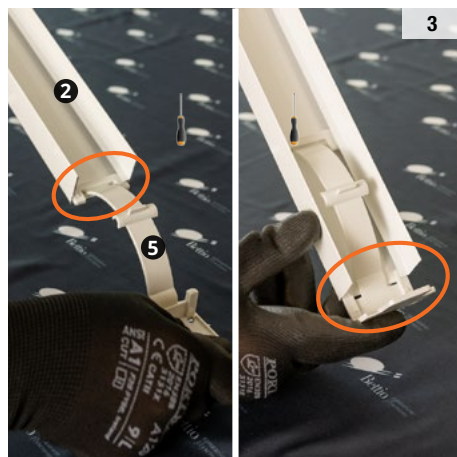
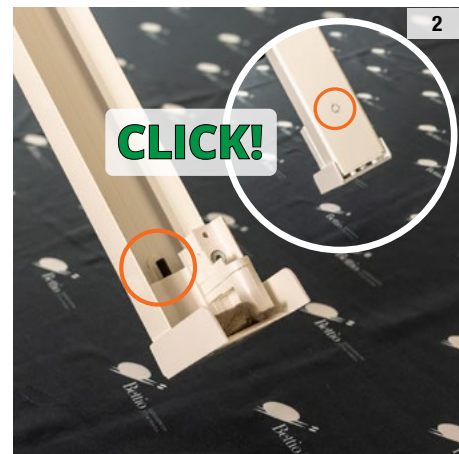
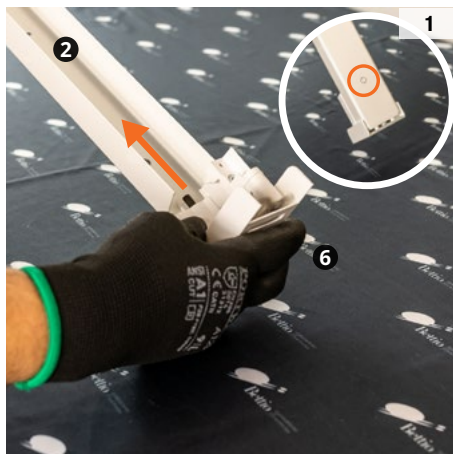


Utensili e accessori consigliati per l'installazione.

LEGENDA



Viti di installazione e regolazione.

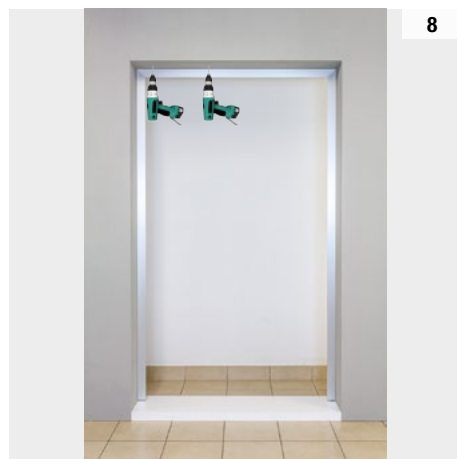




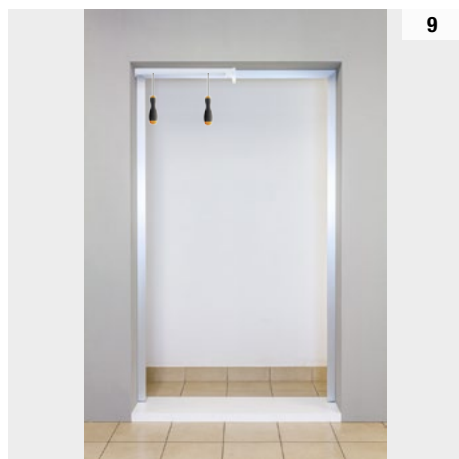
6



7



8



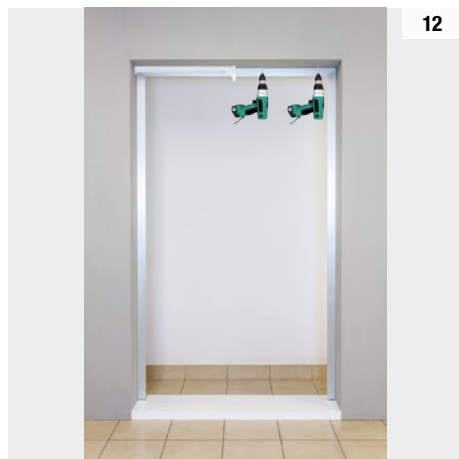
9



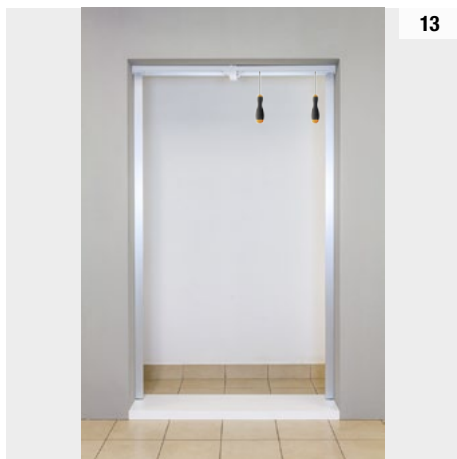
10



11



12



13



14

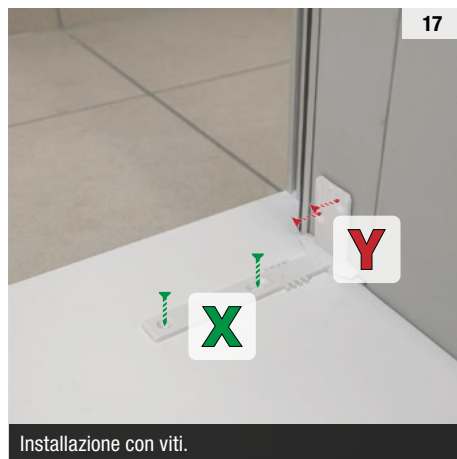


15



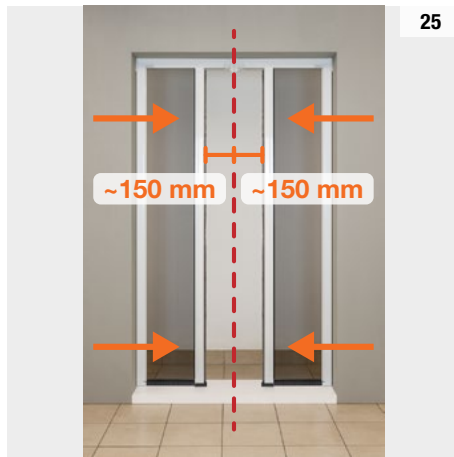
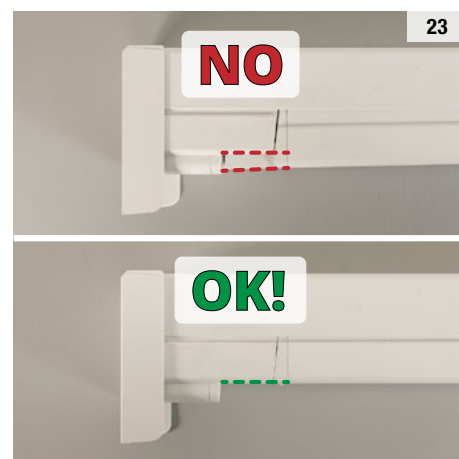
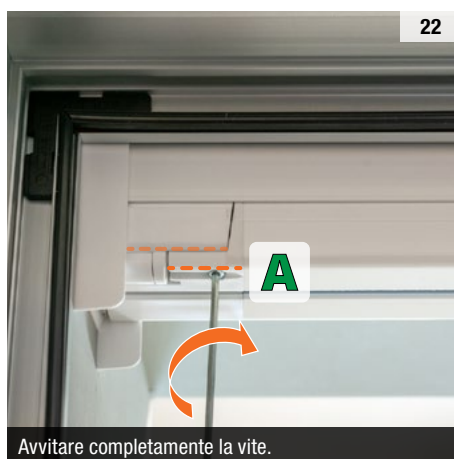
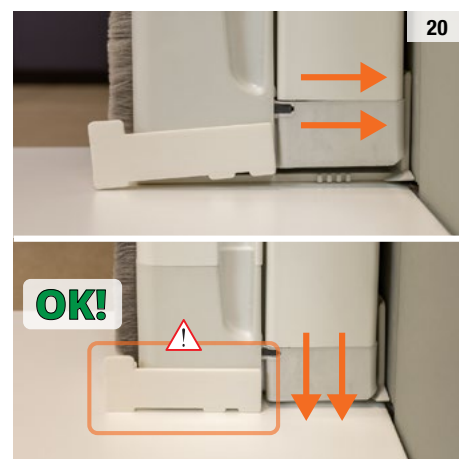
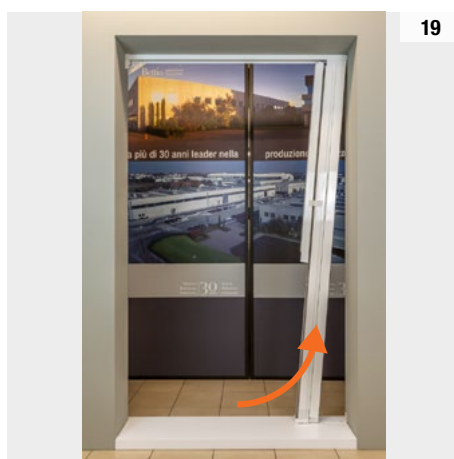
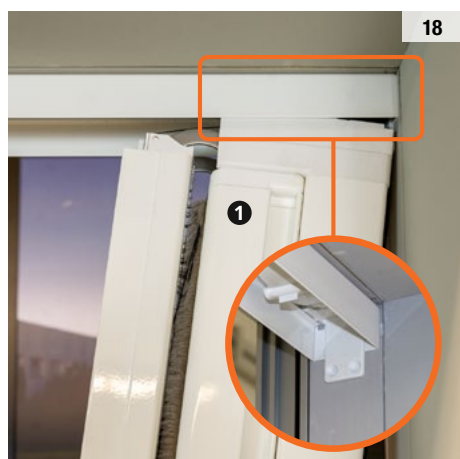
16

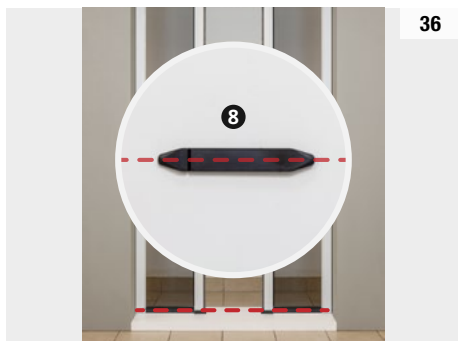
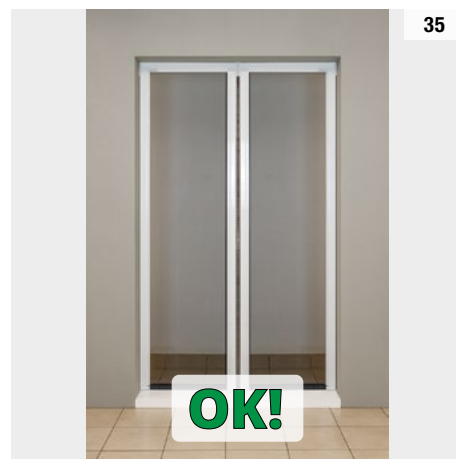
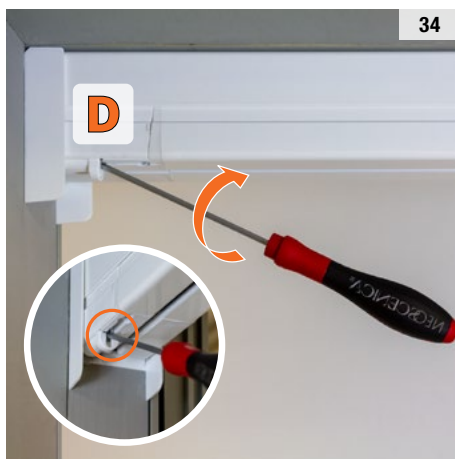
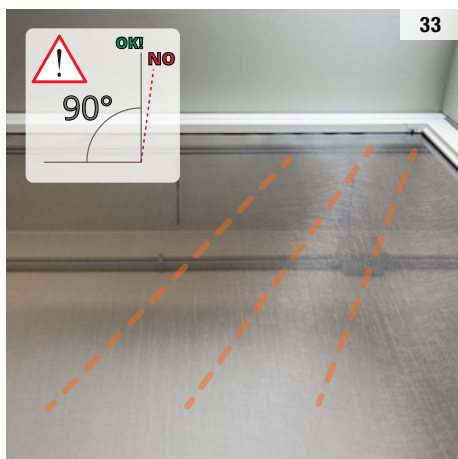
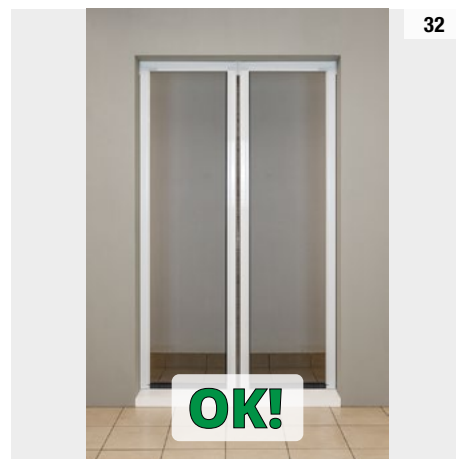
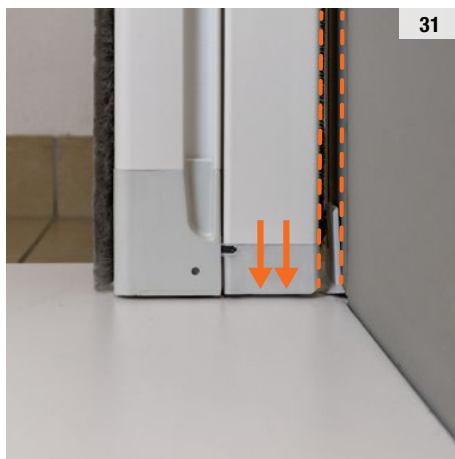
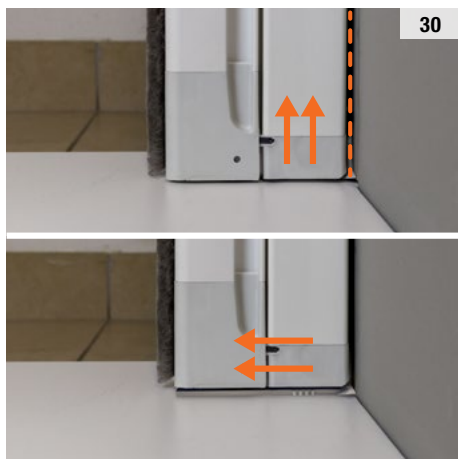
Installazione con biadesivo.
Sgrassare e asciugare la superficie di fissaggio prima
di incollare il biadesivo: la completa adesione si
ottiene dopo almeno 24 ore.



17

Installazione con viti.





Piastrina a pavimento.
Sgrassare e asciugare la superficie di fissaggio prima di incollare il biadesivo: la completa adesione si ottiene dopo almeno 24 ore.



Profilo di scorrimento. Accessorio complementare.
Installazione a discrezione.



Sgrassare e asciugare la superficie di fissaggio prima di incollare il biadesivo: la completa adesione si ottiene dopo almeno 24 ore.